

back to  
School



# Welcome to Year 6

---

MEET THE TEAM

SEPTEMBER 2025

# Meet the Team



## **6R Class Teacher**

Jude Davies

## **6O Class Teacher & YGL**

Katie Lock

## **6M Class Teacher**

David Mitchell



## **FIPC Student Teacher**

Scott Cullen

## **Support Staff**

Larissa O

Gill Conner

Roisin Kelly

## **Year 5 & 6 Phase Leader**

Nicole Gardiner



# Our Vision and Values



At Hazelwood, we believe in nurturing responsible citizens to achieve educational excellence by inspiring awe and wonder through a real, relevant, immersive and purposeful curriculum.



Respect



Kindness



Resilience



Responsibility



Courage



Appreciation  
& Understanding



Ambition



Creativity



Teamwork



Trust



Honesty



Fairness

Our shared values are at the heart of all we do.

## Believe and Achieve

# Hazelwood Schools Curriculum Design



**Our Vision and Values**

At Hazelwood, we believe in nurturing responsible citizens to achieve educational excellence by inspiring awe and wonder through a real, relevant, immersive and purposeful curriculum.

Our shared values are at the heart of all we do.

**Believe and Achieve**

## Our Curriculum Intent

By the time our children leave Hazelwood in Year 6, we strive to ensure that they have:

- Established themselves as nurturing **responsible citizens** within the school and wider community

- Strong subject knowledge across all curriculum disciplines with a **broad range of vocabulary** that enables them to express themselves confidently

- Appreciation and understanding of the diverse world** we live in and their place in the global community

- Embedded values** that support and guide their thinking and behaviours to enable them to succeed in life both socially and academically

- Developed a **positive sense of themselves** with the knowledge, skills and strategies to support them in staying safe and happy in the wider world

- Experienced “awe and wonder moments” through our **real, relevant, immersive and purposeful** curriculum, contributing to a life-long love of learning

- The **belief** that they can achieve **educational excellence** in all that they do

## Our Curriculum Drivers

The content of our curriculum is driven by our core drivers. These are:

**Nurturing Responsible Citizens through our Values**

**Vocabulary**

**Big Questions**

**Real, Relevant, Immersive and Purposeful**

## Hazelwood’s Approach to Teaching and Learning

At Hazelwood you will see a range of real, relevant, immersive and purposeful learning opportunities within a nurturing, enabling environment, including the following approaches to teaching and learning:

- Children **exploring and answering big questions** which allow them to think deeply about their learning
- Children **hearing and using key vocabulary** in a range of contexts
- Children **speaking in full sentences** using the key vocabulary taught
- Cold calling** - supporting all children in engaging in their learning and believing they can achieve
- Adaptive teaching** - responding to the needs of all children
- Retrieval practice** - allowing children to know more, remember more and do more
- Positive relationships and quality interactions** that nurture our responsible citizens
- Spaced and sequential learning** over time to help children learn more quickly and remember learning better.



# The School Day

Soft Start in the mornings – **between 8:40-8:45am** – Children come straight into class.

Our break and lunch times are:

Morning break 10:30am – 10.45am

Lunch 12.15pm-1.15pm

Our school day finishes at **3:15pm**

**6M** – dismissed from Oak side door (outdoor gym equipment)

**6O**– dismissed from Oak side door (outdoor gym equipment)

**6R** – dismissed from Oak side door (Y1&2 playground)





# Our Aims

- To enable children to **achieve their best** by upholding **high expectations of all children – both in their learning and their behaviour**
- To enable a **smooth transition** from Year 5 to Year 6 – supporting children's well being
- To remove the lid on learning – **provide opportunities and challenges for all**
- To ensure that the Year 6 curriculum is **fun and engaging** but also extends the experiences that children have had already at Hazelwood
- To develop **independent learners** who know how they can improve and strive to achieve
- To provide children with a **broad and well balanced curriculum** through a range of learning opportunities which prepares them for KS2 assessments as best as possible and life beyond the primary classroom
- To encourage **responsibility** to ensure children are able to look after their own belongings
- To **develop secondary school readiness** (academically, emotionally & socially) and ensure a smooth transition to their next education chapter
- To have **positive relationships with parents** to ensure success
- To provide children with a **special and memorable end** to their primary education here at Hazelwood.

# Home School Agreement

At Hazelwood Schools we value the link between home and school and the sense of belonging to a community with shared values. It is vital that we work in partnership as the child's first teacher is the parent. We believe that by working in partnership we will ensure your child's success and happiness at our schools. We aim to establish a strong relationship with parents, where there is good communication and an openness to listen, understand and respect each other.



## **Parents:**

### **I/We will do my/our utmost to:**

- Make sure my child attends school regularly, arrives/is collected on time and any absences are properly reported
- Show consideration and courtesy to others by following the schools' Vision and Values
- Support my child in understanding and learning about other religions, beliefs and cultures
- Share relevant information with the school which may affect my child at school
- Support and adhere to all the schools' policies and guidelines
- Ensure only healthy snacks are sent to school
- Regularly look at the schools' website, emails and general communication for updated information about my child's learning and school events
- Respond to school requests eg. Trip permissions
- Ensure my child comes to school wearing the correct school uniform, appropriately dressed and equipped each day
- Abide by the schools' Smart Phone Free policy
- Attend parent consultations and discussions about my child's progress arranged by the school
- Attend curriculum and other information sharing opportunities that will help me support my child and the school
- Support my child in opportunities for learning at home
- Support the schools' social and fundraising activities through HPSA

## **School:**

### **We will do our utmost to:**

- Provide a safe and secure environment for all
- Deliver a real, relevant, immersive and purposeful curriculum, carefully planned to support the needs of your child
- Encourage your child to work to the best of their ability
- Actively teach and promote our Vision and Values and support children with their understanding and learning about other religions, beliefs and cultures
- Ensure children have the opportunities to develop personally as well as academically
- Actively listen to parents and take all concerns seriously
- Promote opportunities for parents to work in partnership with the school
- Keep parents informed about all school matters through emails, newsletters, meetings, website updates etc.
- Inform parents if there are any concerns about your child's learning or behaviour
- Provide regular opportunities to discuss your child's progress and needs
- Provide a variety of opportunities for parents to share feedback on aspects of school life
- Provide an annual report on your child's progress
- Promote a healthy and active lifestyle

## **Child:**

### **I will try my best to**

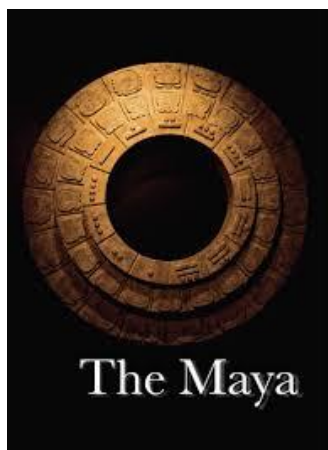
- Follow the schools' Vision and Values and appreciate everyone, their beliefs and cultures
- Come to school each day and on time, wearing the correct school uniform
- Work as hard as I can in my learning, behaviour and attitude
- Remember to follow the schools' 'Good to be Green' behaviour policy
- Show kindness, respect and safety in my online behaviour
- Communicate my thoughts and feelings appropriately
- Complete my homework and join in with creative projects
- Join in with school activities both in and outside of school
- Lead a healthy and active lifestyle

*To avoid unnecessary printing, we are not asking parents/carers to sign this agreement, but it needs to be understood that by sending your child to Hazelwood Schools, you are confirming your agreement to the above.*

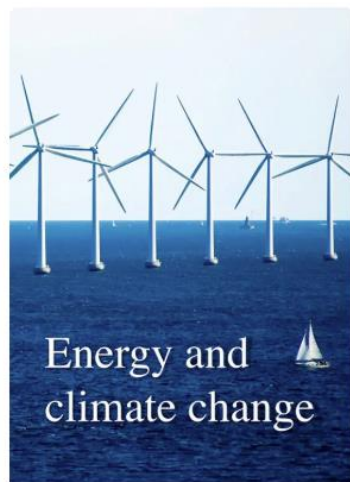
# The Year 6 Curriculum

Over the year, the children will be working on different topics across the curriculum which will cover the key knowledge and skills outlined in the National Curriculum. These are the areas they will cover this half term:

[Link to overview from website– click here to see curriculum overview for rest of year!](#)



**History:** The Maya



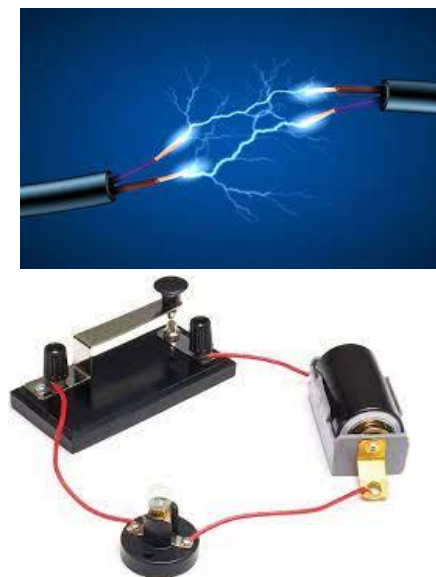
**Geography:**  
Energy & Climate Change



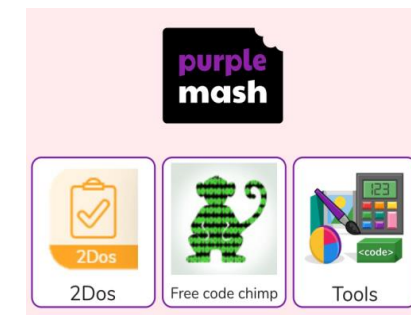
**2d to 3D Art.**  
Create stand up models



**RE Big Question:**  
What can be done to reduce racism?



**Science:**  
Electricity



**Computing:**  
Online Safety & Web design

# Reading



## **In school:**

Daily whole class reading with downsizing  
Regular opportunity to read across the curriculum  
Daily story time

## **At home:**

The children will take home a reading book every week as well as book from our book corner for their enjoyment. We would really appreciate it if you could listen to your child read **at least 3 times per week** and encourage your child to **record in their yellow reading record book**.

The children will visit the library weekly where they will have the opportunity to change their book.

**Children need to bring their book bags into school every day** please as there will be opportunities throughout the school day where adults in the classroom will read with the children or children will be encouraged to read independently.

# Reading



As a school we are continually looking for ways to improve outcomes for children. We have a wonderful and freshly stocked library and we are continuing to assess and manage children's independent reading.

We will be using **Accelerated reader and Star Reader**

- Star Reader quiz will be taken at the **start of each term**. This is an online, adaptive, multiple choice assessment that will give teachers a **ZPD** (Zone of Proximal development) for your child. This will help teachers to monitor their reading comprehension.
- Your child will be given a **Book Level** which will indicate the level book they should choose from the library - they will add this to their reading record too
- This Book Level (B.L) will be monitored by teachers and will ensure that children are reading at a level which stretches and challenges them but does not cause frustration.
- Children will also be encouraged to take reading for pleasure books in addition to their levelled reading book.

Quiz No 216791  
Going Underground

Malam, John  
B.L.: 3.8  
Points: 0.5

LY



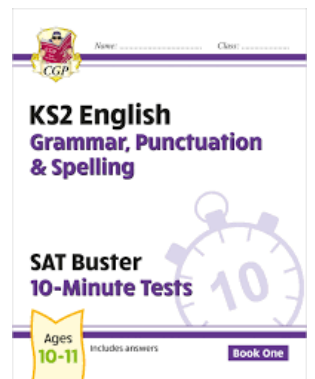
# Reading, English and Maths

- English and Mathematics are taught daily. In these lessons we focus on teaching the children key skills, through practical and problem solving activities.
- Our lessons are adapted to meet the needs of all children and we provide different opportunities for independent, group and paired work.
- In order to maximise children's progress, increase impact of additional staff and prepare children for secondary school, **we will be mixing classes for Reading and Maths lessons.** This means that children may be taught by a different teacher before break but will return to their class teacher in the afternoon. These groups will be **fluid throughout the year.**
- In order to form these teaching groups, we will be taking into account the needs of individual children and discussing with parents if we feel this is necessary. More information will be shared with you via email.

# Year 6 SATs – May 2026



Date	Test
Monday 11th May 2026	Grammar & Punctuation test - 45 minutes Spelling Test - 20 minutes
Tuesday 12th May 2026	English Reading Test - 60 minutes
Wednesday 13th May 2026	Mathematics Arithmetics (Paper 1) - 30 minutes Mathematics Reasoning (Paper 2) - 40 minutes
Thursday 14th May 2026	Mathematics Reasoning (Paper 3) - 40 minutes



- Children will sit **practice SATs assessments** roughly half termly throughout the year to help identify gaps, inform planning, prepare children and structure support.
- **They will bring home their papers** so you can explore these further at home we are happy to discuss these results with you all will post mark schemes on Google Classroom. We can discuss more at parents evening too!
- **Please therefore, do not use past DFE assessment papers at home with your child.**
- We will use **CGP 10 minute test revision books in school** around Easter time but other CGP revision books are available and very useful to support your child. Please speak to us for more information
- **SATs Test Parent Meeting** - Tuesday 17th March 9am - 10am

# Things to look forward to



- ❑ **PGL/ Activity days** – this will be a wonderful experience for the children!
- ❑ **Forest Schools** – Autumn 2
- ❑ **Broomfield Remembrance Service** – Tuesday 11<sup>th</sup> November (11am)
- ❑ **D&T Sewing Morning** – Tuesday 2<sup>nd</sup> December (9-10.30am)
- ❑ **D&T Fashion Show** – Thursday 11<sup>th</sup> December (9-9.30am)
- ❑ **HMS Belfast Trip** – Summer 2
- ❑ **End of year production** – Summer 2
- ❑ **Secondary Transition Days** – Summer 2
- ❑ **Year 6 Disco** – Summer 2



# PE



PE days are:

- 60 – Wednesday & Thursday
- 6R – Wednesday & Tuesday
- 6M – Wednesday & Tuesday
- Children should come to school in their PE kit on PE Days
- Indoor PE kit should consist of: shorts, t-shirt, plus trainers
- Outdoor PE kit should consist of the same as the indoor kit, plus trainers, tracksuit bottoms and a long-sleeve top for cold weather
- Long hair should be tied back.
- No jewellery. For Health and Safety reasons, staff are not allowed to remove a child's earrings. This must be done either by the child or their carer beforehand.





# Homework

At Hazelwood Schools, we believe that homework should provide opportunities to:

- reinforce learning that has taken place in the classroom
- provide opportunities for parents to become more familiar with their child's learning and enjoy a shared learning experience with their child
- prepare children for the next academic stage of their school life
- develop valuable life skills and good work habits such as organisation and time management
- foster independence, confidence and resilience
- inspire creativity and curiosity outside of the classroom

In addition, homework at Hazelwood should be:

- enjoyable and accessible
- consistent across all classes in a year group as well as show consistency across the school
- pitched at the right level for the child's attainment
- manageable for busy family lifestyles

# Homework



## **Reading**

From Year 2 onwards, children will be allocated home reading books based on reading and comprehension assessments in class. Once a week children will be given the opportunity to exchange this book if they have finished it.

## **Expected Weekly Homework – Maths and Spelling**

Expected weekly homework will be found on Google Classroom and will usually require online completion. Homework will be set on a Thursday and be expected to be completed by the following Tuesday.

## **Maths**

From Year 1, Maths homework - based on the child's level of understanding - will be set each week to support children with prior and/or upcoming learning. We use Maths shed.

## **Spelling**

From Year 2 onwards, at the beginning of each half term, a list will go out with the half-termly spellings. Children will be tested on these spellings at the end of the half term. Each week, children will be taught explicit spelling rules in class and this will be supported by weekly homework to reinforce these rules.

## **Homework Grid**

Each half-term the children will have access to complete optional homework on Google Classroom. This will contain a variety of different tasks from different subject.



# School Uniform

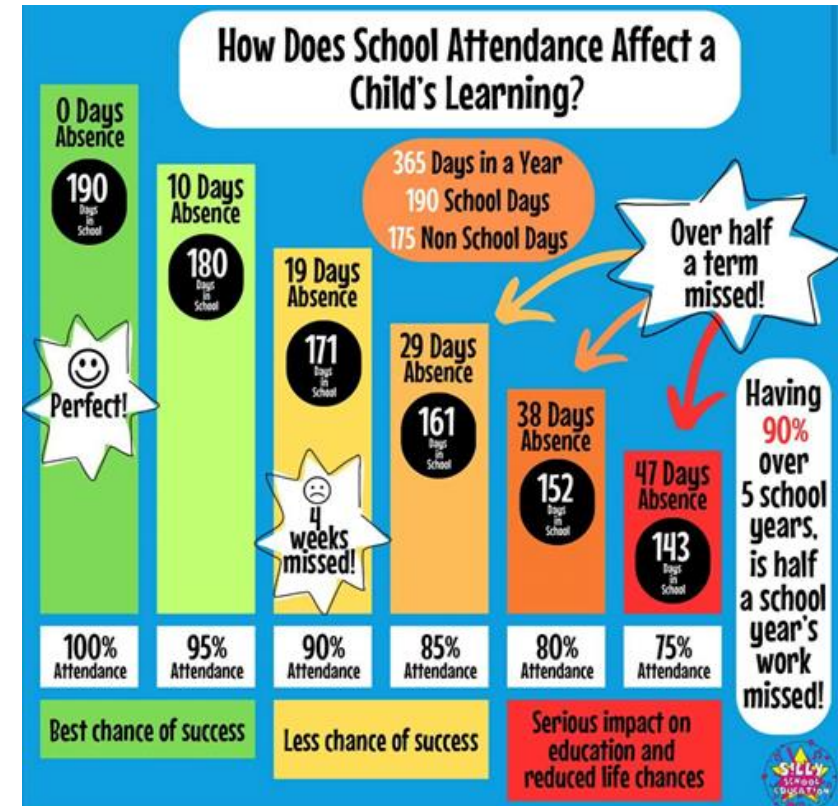
- Children should always be smart
- School jumper (worn or held, not tied around the waist)
- White or red polo shirt – always tucked in
- Black / grey trousers / skirt
- Black shoes (no coloured laces etc...)
- Hair should be tied back if long
- No nail varnish and stud earrings only
- No other jewellery unless for religious reasons (all jewellery must be removed for PE)



# Attendance and Punctuality



- Please make sure your child attends every day and is on time.
- Being late has an impact on your child's self regulation, routine and learning.
- Attendance is important. Research shows that a 1% increase in attendance can lead to a 5% increase in attainment.
- However, please do not send your child to school if they are sick!
- New attendance guidance has been released in August, meaning that we will need to be tighter on the authorising of absences, particularly when a child is at risk of becoming a persistent absentee.
- Holidays during term time cannot be authorised under any circumstances



# Reporting Absence



This year, we will be moving away from the google form and asking you to report daily absences through the Arbor App.

To report an absence of any kind, including appointments, please follow these steps:

- Log in to the Arbor App and click on your child
- Scroll down and click on “Attendance” (underneath the “Statistics” heading)
- At the top of this page is a green banner that says “Log Absence”
- Click here and complete the form, giving a reason for the absence.

Please use this system for all daily absences – there is no need to phone the office to check that this has gone through. If the absence is for a date in the future (e.g. for an upcoming appointment), please email the office.

# Lunch



Summer/Autumn 2024		Pork Free					Pupils Choice Extra Menu				
		MONDAY	TUESDAY	WEDNESDAY	THURSDAY	FRIDAY	15 APRIL, 7 MAY, 3 JUNE, 24 JUNE, 15 JULY, 2 SEPTEMBER, 23 SEPTEMBER, 14 OCTOBER				
WEEK 1	MAIN MEAL 1	Creamy Chicken Pasta Bake	Herb Crusted Chicken with Spaghetti Marinara	Roast Chicken with Sage & Onion Stuffing & Gravy	Favourite Quorn Hot Dog	Battered Fish Fillet					
	MAIN MEAL 2	Cheese & Tomato Quiche	Mild Sweet Potato & Chickpea Curry	Mince Slice	Cheesy Spring Vegetable Bake	Classic Cheese & Tomato Pizza					
	SIDE DISH	Potato Wedges	Brown & White Rice	Roast Potatoes or Wholemeal Pasta	Diced Potatoes or Garlic Bread	Potato Wedges or Tricolour Pasta					
	COLD OPTION	Tuna Roll	Cheese Spread Roll	Tuna Sandwich	Cheese Baguette	Egg Roll					
	EXTRA OPTION	Jacket Potato (Various Toppings)	Jacket Potato (Various Toppings)	Jacket Potato (Various Toppings)	Jacket Potato (Various Toppings)	Jacket Potato (Various Toppings)					
							22 APRIL, 13 MAY, 10 JUNE, 1 JULY, 22 JULY, 9 SEPTEMBER, 30 SEPTEMBER, 21 OCTOBER				
WEEK 2	MAIN MEAL 1	Tex Mex Quorn Fajita	Chicken Pie	Roast Chicken with Sage & Onion Stuffing & Gravy	Beef Burger in a Bun	Salmon Fishcake					
	MAIN MEAL 2	Creamy Macaroni Cheese	Moroccan Tagine	Plant Balls with Gravy	Roasted Summer Veg Pasta	Classic Cheese & Tomato Pizza					
	SIDE DISH	Rice or Tomato Bread	Diced Potatoes or Couscous	Roast Potatoes or Brown & White Rice	Potato Wedges or Herby Bread	Oven Chips or Tricolour Pasta					
	COLD OPTION	Cheese Baguette	Tuna Sandwich	Tuna Roll	Cheese Spread Sandwich	Egg Roll					
	EXTRA OPTION	Jacket Potato (Various Toppings)	Jacket Potato (Various Toppings)	Jacket Potato (Various Toppings)	Jacket Potato (Various Toppings)	Jacket Potato (Various Toppings)					
							29 APRIL, 20 MAY, 17 JUNE, 8 JULY, 16 SEPTEMBER, 7 OCTOBER				
WEEK 3	MAIN MEAL 1	Chicken Curry	Grilled Quorn Burger in a Bun	Turkey Roast with Sage & Onion Stuffing & Gravy	Beef Lasagne	Fish Fillet Fingers					
	MAIN MEAL 2	Honey Mustard Sausage Roll	Rich Tomato Bolognese	Roast Quorn Fajita with Sage & Onion Stuffing & Gravy	Chopped Sausages with Gravy	Classic Cheese & Tomato Pizza					
	SIDE DISH	Rice or Diced Potatoes	Potato Wedges or Spaghetti	Roast Potatoes or Wholemeal Pasta	Herby Bread or Diced Potatoes	Oven Chips or Tricolour Pasta					
	COLD OPTION	Cheese Spread Sandwich	Cheese Baguette	Tuna Roll	Tuna Sandwich	Egg Roll					
	EXTRA OPTION	Jacket Potato (Various Toppings)	Jacket Potato (Various Toppings)	Jacket Potato (Various Toppings)	Jacket Potato (Various Toppings)	Jacket Potato (Various Toppings)					

Seasonal vegetables and a variety of salads are served daily. = Vegetarian = Vegan.

We are proud to use the following food brands: We are accredited by:

@hdcatering [www.hcl.co.uk](http://www.hcl.co.uk)

- All children in London are currently are entitled to a universal free school meal.
- If you would like your child to have a school prepared lunch you need log in to your account and pre order this via **school grid**.
- You can to order lunches up to a term in advance.
- All Lunches must be order by 8.00am in the morning.

# Welfare



## Short Term Care Plans

- If your child needs to take medication such as antibiotics or hayfever medication for a short a period of time, please fill in a short term care plan which gives the school permission to administer the medication. This form can be filled in at the office.

## First Aid

- Children will receive first aid from a member of first aid trained staff
- If your child has had a bump on the head you will receive a text
- You will be informed immediately of any serious injuries
- Any time that your child receives first treatment will be given a green (for first aid) or orange band (for bumped head) on their wrist
- If your child has vomited or had diarrhoea you would be asked to collect your child immediately and keep them off school for 48 hours



# Secondary Transfer



## **Hazelwood Secondary Transfer Information Meeting**

Tuesday 16<sup>th</sup> September  
5.30pm – 6.30pm

*Information about applying  
for a secondary school  
place for Sept '26*

# Other notes...

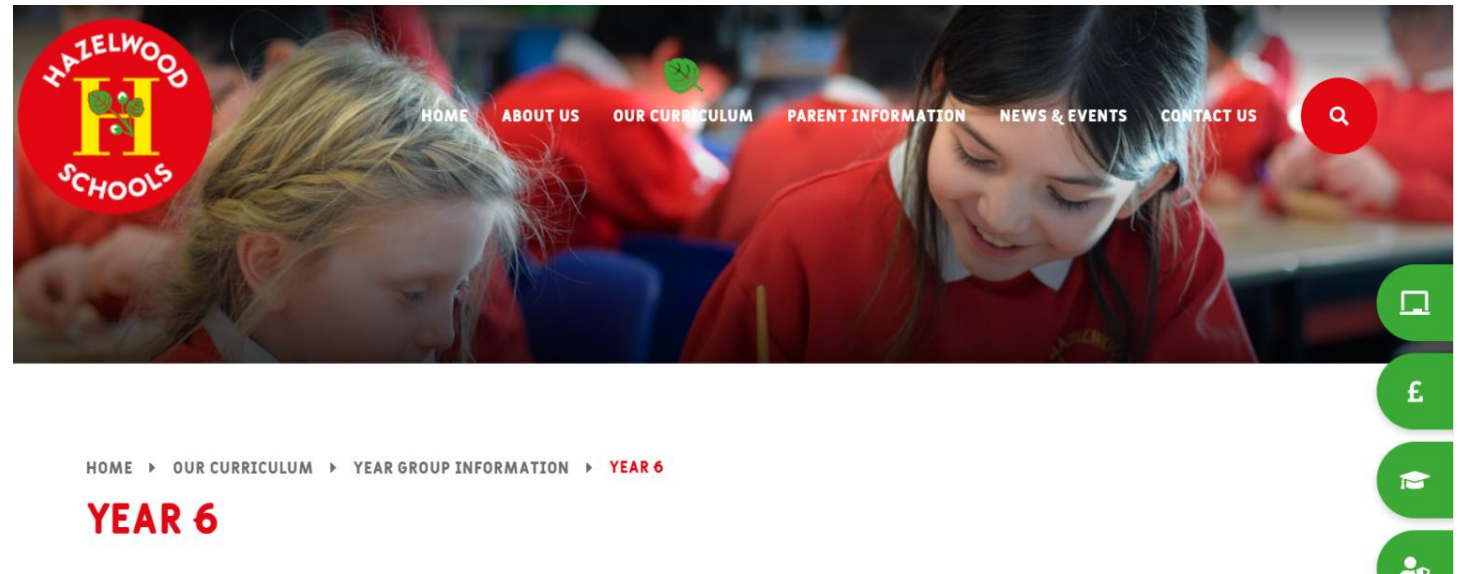


- **Walking home from school** – Please provide written permission or on Arbor
- **No Smart phones – brick phone only** for children who have permission to walk home
- **Healthy snacks only please** – no crisps or chocolate
- **Water bottles** – should be labelled and brought into school every day
- **No Nuts** – please be aware we are a nut free school & there are children with severe nut allergies.
- **Birthdays** – packaged items only, no items that may contain nuts (we have a number of vegetarian/halal children)
- **Speaking to us** – our relationship with parents/carers is really important. The best way is to communicate via email through the office with a reason why you need to speak to us and we will give you a call back as soon as we can! Or speak to SLT in the mornings or catch us at the end of the day.

# Communication



- Website
- Newsletters
- Weekly round-up
- End of the day
- Emails



<https://www.hazelwoodschoools.org.uk/page/?title=Year+6+Curriculum&pid=101>

# Arbor - Information about your child



## Arbor

- Login to update information about your child such as medical needs, permissions etc.
- All communication will be via email and come from [office@hazelwood.enfield.sch.uk](mailto:office@hazelwood.enfield.sch.uk)
- Payment items will be added to clubs, trips or schools shop on Arbor



# WhatsApp Groups & Social Media

Parents should adhere to the following guidelines when using class WhatsApp groups and when using online platforms:

- The WhatsApp groups/online platforms should never be used as a platform to air views/grievances regarding a teacher, child or parent in the class or school
- The WhatsApp groups/online platforms are not political platforms for airing opinions on current affairs
- The WhatsApp groups/online platforms should not be used for private conversations with anyone else using the group
- The WhatsApp groups/online platforms should be used keeping in mind mutual respect and cultural sensitivity between all its members



# School Website

[www.hazelwoodschoools.org.uk](http://www.hazelwoodschoools.org.uk)





Any  
Questions?

