

WORKING
DRAFT

Enfield's Special Educational Needs and Disabilities (SEND) Partnership Strategy 2022-2026

Summary for engagement



www.enfield.gov.uk

In partnership with

PARTNERSHIP LOGOS TBA

Introduction

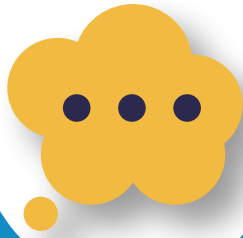
We have high aspirations for every child and young person in Enfield. We want them to achieve their best at all stages of their learning, in everyday life, in their health and wellbeing; and as they take their next step into adulthood and working towards their independence. To achieve this, we must support and empower our families to give their children the best start in life, to discover and achieve their goals and to shape their lives and futures in the way they want.

Enfield's Special Educational Needs and Disabilities (SEND) Partnership Strategy will set out our shared vision, principles and priorities as we work together over the next 4 years to support children and young people with SEND, from birth to the age of 25.

The SEND Partnership are responsible for leading our local alliance and for delivering the strategy. The partnership brings together representatives from our parent and carer groups and expertise from education, health, social care and the voluntary and community sector.

Our draft vision, principles and priorities have been developed in partnership with our local SEND Strategy Development Group members, and are based on research, best practice and local evidence of need. Over the next few months we will be talking to our families, educational settings, our partners and stakeholders to hear their views and ideas on the draft strategy; and for how we can continue to work together to deliver the final priorities. Our final SEND Strategy for 2022-2026 to be published in summer 2022.





Our Vision

Our Vision is for all our children and young people with SEND to feel safe, healthy, happy and included in their educational setting and communities. We want our children and young people to discover and achieve their goals and we want to enable them to be at the heart of decision making, so that they can make positive choices about their lives and futures. Together, our collective ambition is to make Enfield an inclusive borough where “SEND is everyone’s business”. An inclusive Enfield is a place where diversity and difference are understood and celebrated, and where barriers are minimised or removed.



Our Principles

Our Principles will guide how we will work with children, young people and their families.

- Children, young people and their families are empowered, respected and included in the decisions that affect their lives and futures.
- Work together with children, young people and their families to build on their strengths and enable them to be as independent as they can be.
- Work in partnership to provide the right support as early as possible, in the right place and at the right time.
- Effectively manage our resources to provide equity for all our children and young people.



Our Priorities

As a SEND Partnership we embrace difference and we are committed to supporting our children and young people to thrive, throughout their childhoods and as they prepare for adulthood. This commitment is at the heart of our work, which is underpinned by our core values as a SEND Partnership.

Our core values are:

- To understand the lived experiences of our children, young people and their families and how this affects them on a day to day basis, so that we know how to meet their needs.
- Build trusting relationships.
- Work together to find solutions.
- Work in a transparent and respectful way, taking responsibility for supporting the improvement of our children and young people’s life chances.

Priority 1

Know our local area and understand and plan for the needs of our children and young people with SEND and their families.

We are getting to know our children and young people with SEND and their families even better. We believe that strengthening our knowledge and understanding of our SEND community and their needs, will help us to enhance the way we plan, strategically commission and deliver the services and support that children, young people and their families need both now and, in the future. An important part of this work is exploring opportunities to develop a new data dashboard, to help us manage, share and analyse high quality data and information, from across our partnership. However, we know that numbers are just part of the picture, and alone they can't give us a full understanding of our community's needs, which is why the voices and experiences of Enfield's children, young people and their families are at the heart of our work.

Our objectives:

- Collect high quality data and knowledge, to understand our SEND community, their lived experiences, and the effectiveness of our services. This includes by formally training a group of young people through our Young Inspectors Programme.
- Continue to extend the range of opportunities to work in partnership with children, young people and their families to influence and shape services and support in Enfield.
- Analyse and identify local trends to help us to better plan and future-proof services and support.
- Continually evaluate our services for children and young people with SEND to make sure we are managing our resources effectively to have the greatest impact. This includes those services we provide ourselves, and those we commission other organisations to deliver.
- Develop and agree a set of shared outcomes across the SEND Partnership so that we are aligned in our ambition for our children and young people.

Priority 2

Identify the needs of children and young people with SEND and provide the right support in the right place, and at the right time.

The SEND Partnership are committed to making sure that our children, young people and their families get the right support at the right time, by identifying and assessing their needs early. For some families their child's needs may be identified before they are born, at birth, or they may emerge or change as their child grows up.

Early identification is an important first step, to making sure their needs continue to be met at all stages of their childhood and into adulthood, whether that is through services and support that are ordinarily available to all children and young people, or through targeted or specialist services.

We also understand how important it is for our families to be able to access the right information, advice and support for their child's individual needs and their family circumstances. This includes when awaiting a specialist health assessment.

Our objectives:

- Identify SEND early by effectively developing our services, to ensure robust processes and the right workforce skills are in place across education, health and social care.
- Ensure our families have access to appropriate information, support and advice. This includes well-publicised and clear pathways across the community and through our online Local Offer, to meet the differing needs of our children and young people with SEND and their families.
- Continue to develop our provision through educational settings and the community for children and young people who receive SEN support, but who do not have an Education Health and Care Plan (EHCP).
- Ensure fair and transparent processes are in place to deliver an effective travel assistance offer where needed. This will be based on our ongoing review of travel assistance.
- Work together to educate our children and young people locally and where possible within mainstream settings. To support this, we are developing an effective approach to School Place Planning and continuing to provide a range of opportunities in mainstream schools to meet the needs of children and young people. This includes increasing the number of Additionally Resourced Provisions (ARPs), and designated units in mainstream schools.

Priority 3

Continue our work towards providing an inclusive education and community environment for all our children and young people with SEND.

“SEND is everyone’s business” and we all share a responsibility for working together to make Enfield a SEND inclusive borough. The SEND Partnership believes that an inclusive borough is one that works together with our community, schools and educational settings, employers, service providers and partners to support children and young people to thrive in all areas of their lives. At the heart of this is developing a culture where we embrace difference; where barriers are minimised or removed; and where the interests and needs of our SEND community are better understood in local decision-making. One of the ways that we are doing this, is through our Enfield Inclusion Charter.

Our objectives:

- Support early years settings, schools, colleges and partners to understand the principles of trauma informed practice and this is embedded in their day to day work.
- Encourage our schools and colleges to sign up to and live by the principles of the Enfield Inclusion Charter.
- Empower children and young people with SEND to further their independence and prepare for adulthood, including through good quality work experience, supported internships or meaningful volunteering tailored to their interests and goals.
- Continue to engage with children and young people with SEND, their parents and carers, and our partners, to further develop the range of play, leisure and social opportunities available in the community.
- Ensure there are inclusive travel assistance options for children and young people getting to and from school or college, so that young people can be as independent as they can be, as early as possible.
- Work together with schools and settings to develop an effective approach to improving overall attendance in schools and colleges.

Priority 4

Ensure Education Health and Care (EHC) needs assessments and Education Health and Care Plans (EHCPs) are completed on time and to a high standard.

Some of our children and young people with SEND will need an Education Health and Care Plan (EHCP). This is a legal document, which sets out how their special needs can be supported through education, health and social care. Children who do not need an EHCP, can still receive SEN Support at school, which is tailored to their individual needs and met through the school's notional budget.

Where a child or young person requires an EHCP, we will work together with them and their family to make sure that their views, feelings, wishes and aspirations are at the heart of their EHCP. Looking ahead, we are continuing to improve the time it takes us to complete statutory needs assessments and EHCPs. Additionally, we are committed to making sure EHCPs are of a consistently high standard and our workforce across the partnership have the skills they need to confidently develop EHCPs, which include high quality professional advice. We call this our quality assurance process.

We are strengthening our annual review process to make sure every child and young person’s EHCP is working, and we are making a positive difference towards their independence.

Our objectives:

- Continue to complete 95% or more of statutory EHC needs assessments on time.
- Aim to produce 95% or more of EHCPs within the statutory 20-week timeframe without exceptions.
- Ensure our EHCPs are co-produced with our children, young people and their families, are easy to understand and provide a clear account of the child or young person’s needs and aspirations, linked to the right services and support. This includes planning and preparing for adulthood and their independence.
- Continually review and strengthen our processes to ensure every child and young person’s EHCP is of a high standard.
- Improve our Annual Review process, to ensure 60% of our decisions to maintain, amend or cease the EHCP are completed within the statutory timeframe.

Thank you for taking the time to read Enfield's Special Educational Needs and Disabilities (SEND) Partnership Strategy 2022-2026 – Summary for engagement; we hope you found it interesting and helpful. If you have any questions or comments, please get in touch as we value your feedback.

 **consultation@enfield.gov.uk**

 **www.enfield.gov.uk**

 **@EnfieldCouncil**

 **EnfieldCouncil**