

Enfield Inclusion Charter

A charter for early years settings, schools and colleges committed to providing an inclusive education for children and young people in Enfield.

Signing the Inclusion Charter is a commitment to:

- ✔ Provide clear, visible and strong leadership for inclusion
- ✔ Ensure that everyone takes responsibility for including children and young people with special educational needs and disabilities
- ✔ Understand that all behaviour happens for a reason
- ✔ Listen and respond to children and young people's opinions and ideas when making any decision which impacts on their lives
- ✔ Celebrate difference and diversity
- ✔ Work with families, professionals and practitioners across our community to help all children and young people to thrive
- ✔ Ensure that everyone is comfortable to be open and honest about what support they need to help children and young people in their care
- ✔ Support children and young people to prepare for their adulthood from the early years and throughout their childhood and adolescence, so they can shape their future in the way they want.

The Charter has been developed by children and young people, headteachers, teachers, parents and carers, council officers, health partners and voluntary sector organisations.

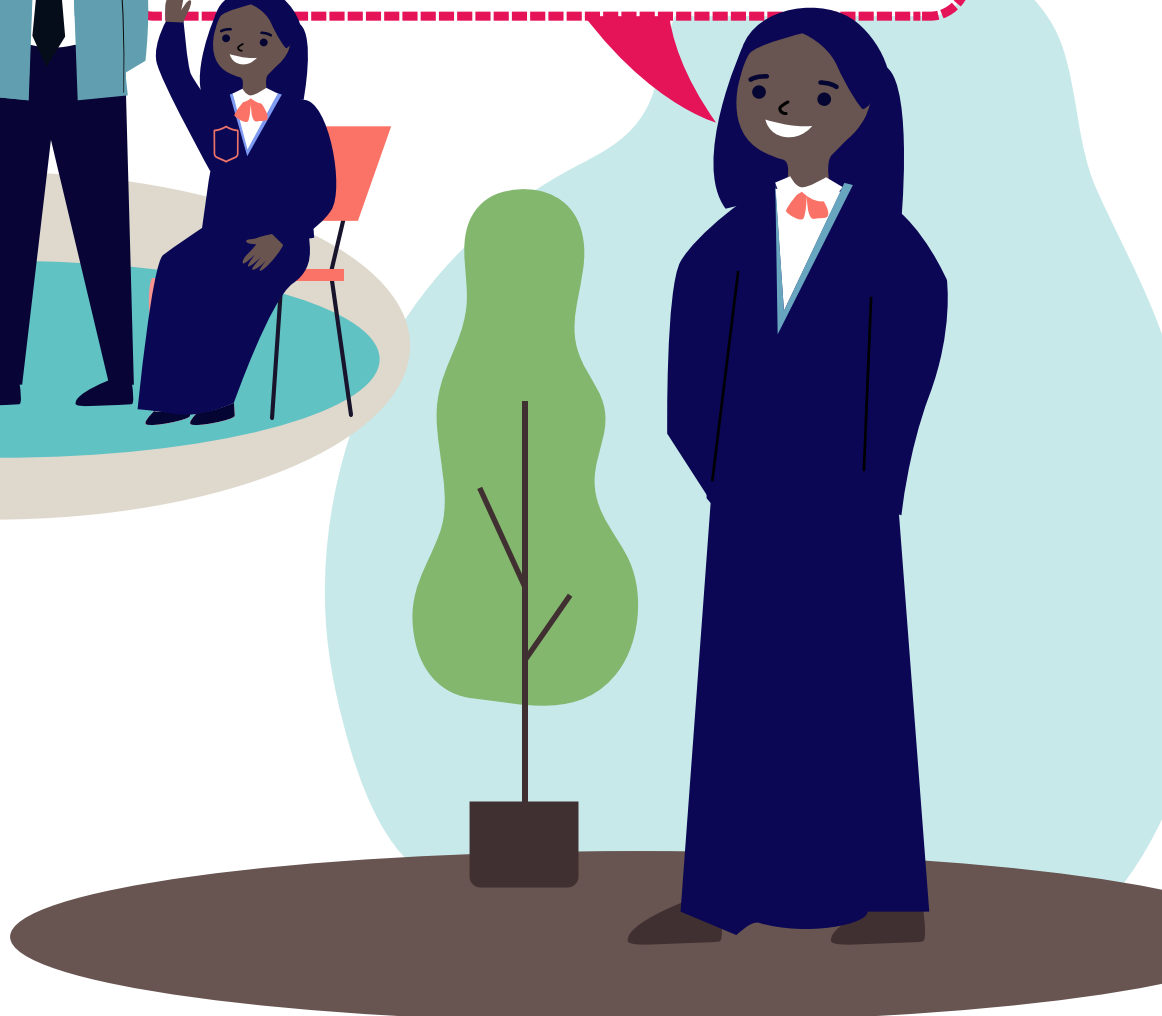


Provide clear, visible and strong leadership for inclusion



Ensure that everyone takes responsibility for including children and young people with special educational needs and disabilities

It was my first day in Year 4. My new teacher had talked to my Year 3 teacher and had read my Education Health and Care Plan. He knew what I liked, what I don't like and what I need help with.



All behaviour happens for a reason

**We talked about the things
that worry me and I now
feel safe and supported by
my teacher, which will help
me in class.**



Listen and respond to children and young people's opinions and ideas when making any decision which impacts on their lives

My school listened to me when I said the playground is sometimes too noisy. Now there are quieter areas of the playground we can go to and I'm not worried about lunchtime any more.



Celebrate difference and diversity

**We feel part of our school and
that we belong.**



Work with families, professionals and practitioners across our community to help all children and young people to thrive

Everyone is working together so I can get the right help.



Ensure everyone is comfortable to be open and honest about what support they need to help children and young people in their care

Training from Enfield Advisory Service for Autism has helped me work more inclusively with my pupils. No 'one size fits all.' I'm looking forward to trying new strategies.

TEACHING ASSISTANT

I know where to go for support from my colleagues when I need it.

LEARNING SUPPORT ADVISOR

Our training on speech, language and communication needs is having a positive impact on our teaching across the school.

TEACHER



Support children and young people to prepare for their adulthood from the early years and throughout their childhood and adolescence, so they can shape their future in the way they want

